

RESIDENCE 01

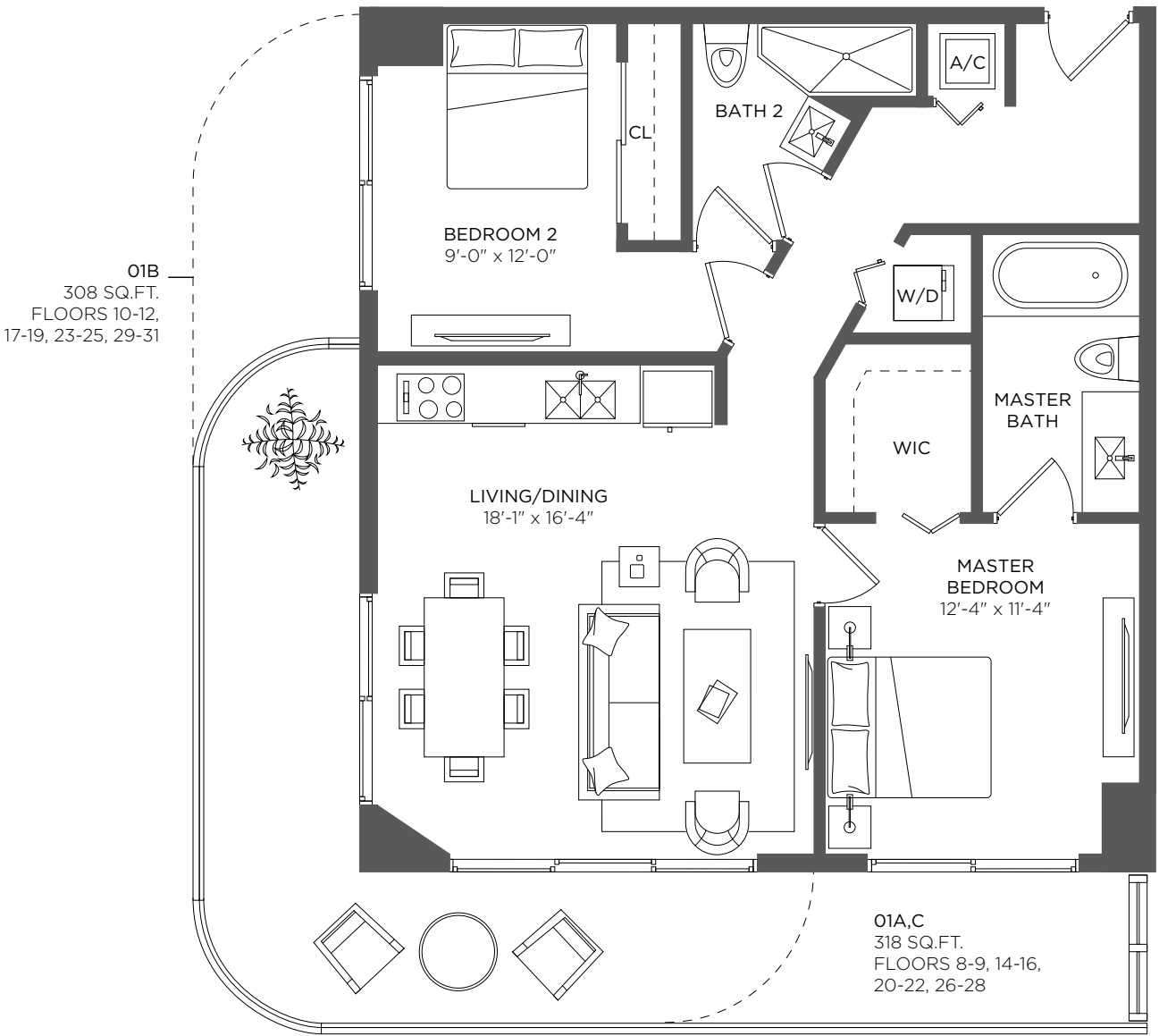
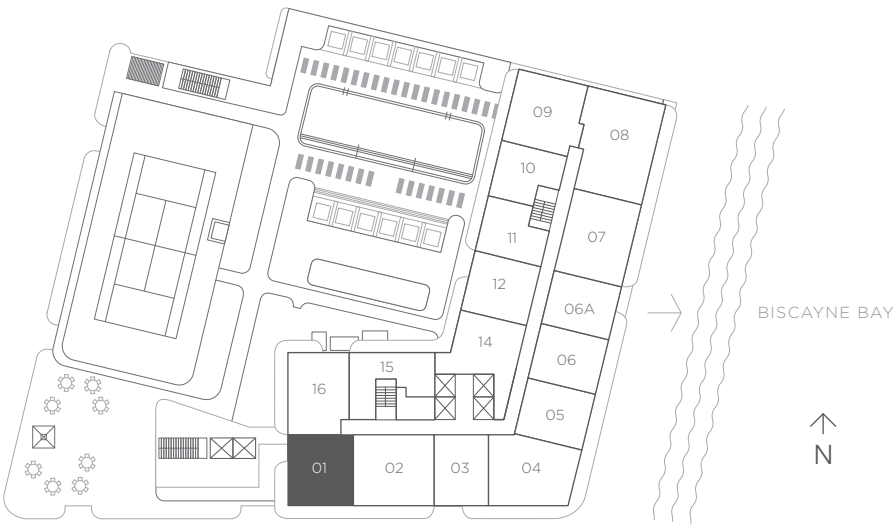
2 Bedrooms 2 Baths

A/C INTERIOR AREA 938 sq ft / 87.14 sq m

TERRACE AREA 318 sq ft / 29.54 sq m

TOTAL RESIDENCE 1,256 sq ft / 116.68 sq m

FLOORS 8 - 31



There are various methods for calculating the square footage of a Unit and depending on the method of calculation, the quoted square footage of a Unit in advertising materials may vary from the square footage of a Unit as stated or described in the Prospectus and the Declaration. The dimensions in the Unit shown in these floor plans have been calculated from the exterior boundaries of the exterior walls to the centerline of interior demising walls, including common elements such as structural walls and other interior structural components of the building and in fact vary from the dimensions that would be determined by using the description and definition of the "Unit" set forth in the Prospectus and the Declaration. For your reference, the area of the Unit, determined in accordance with the Unit boundaries as defined in the Prospectus and the Declaration is 841 sqft for units 801, 901, 1001, 1101, 1201, 1401, 1501, 1601, 1701, 1801, 1901, 2001, 2101, 2201, 2301, 2401, 2501, 2601, 2701, 2801, 2901, 3001 and 3101, which is less than the square footage reflected here. The measurements of room set forth on this floor plan are generally taken at the greatest points of each given room (as if the room were a perfect rectangle) without regard for any cutouts. Accordingly, the area of the actual room will typically smaller than the product obtained by multiplying the stated length times width. All dimensions are approximate and may vary with actual construction. All floor plans are subject to change. The furnishings and décor illustrated are not included with the purchase of the Unit. See Prospectus for information regarding what is offered with the Unit and the calculation of the Unit square footage and dimensions.

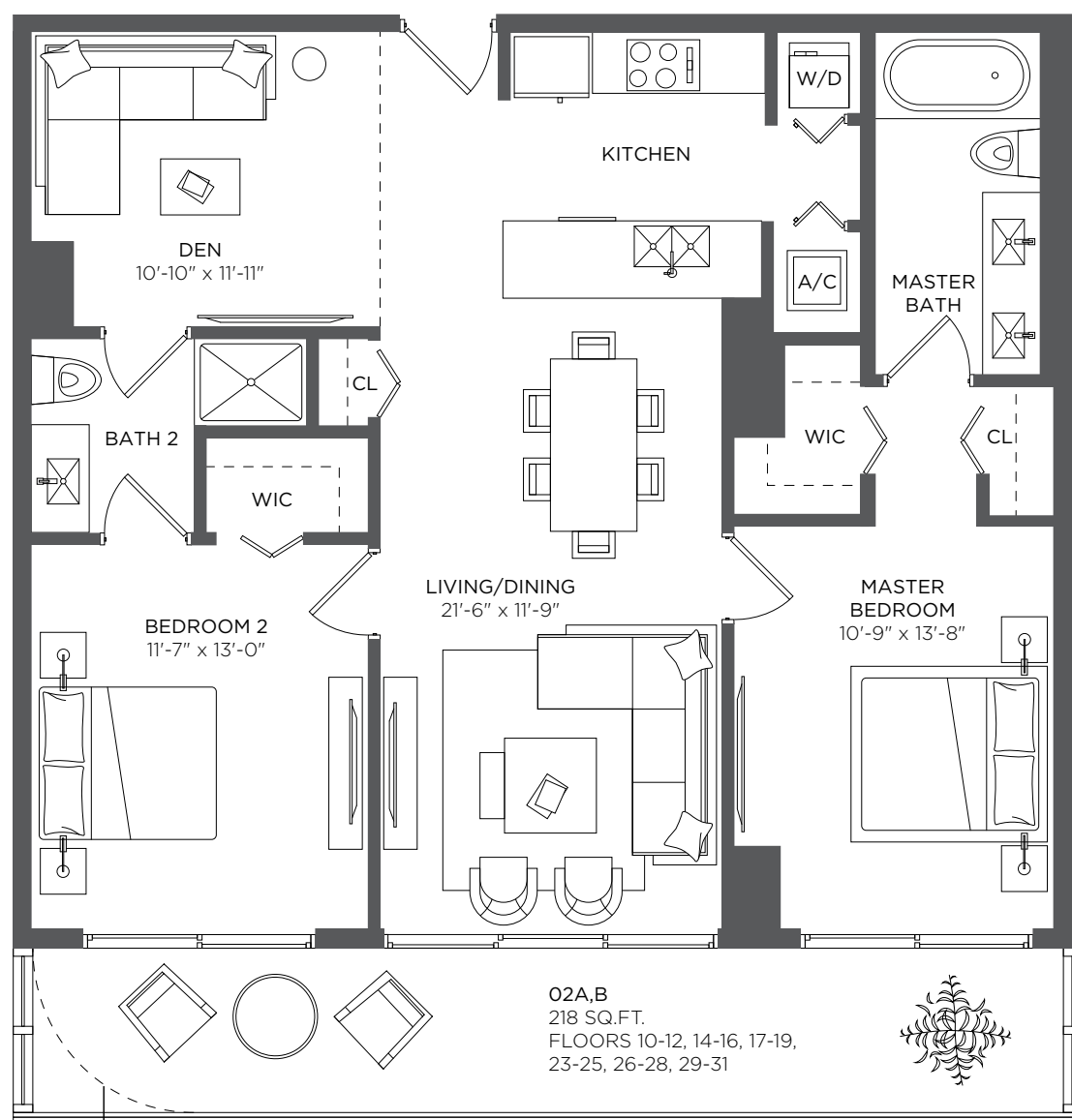
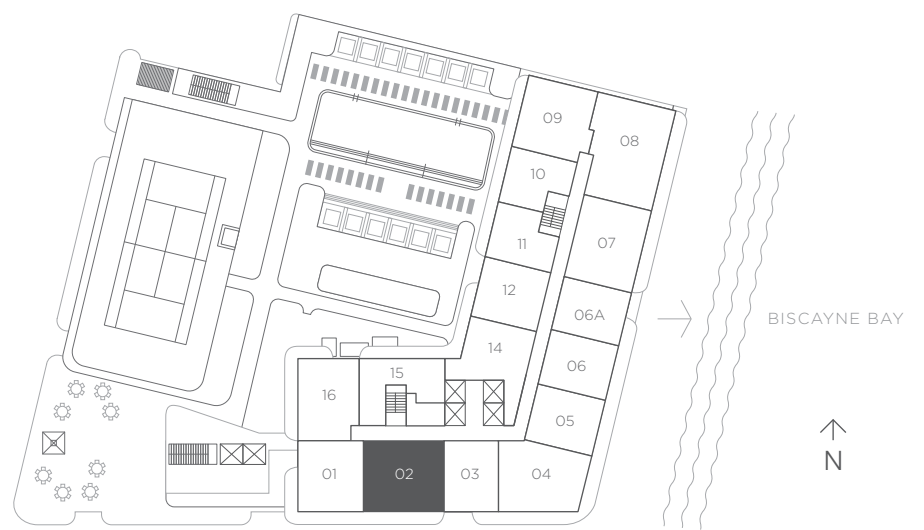


RESIDENCE 02

2 Bedrooms 2 Baths + Den

A/C INTERIOR AREA	1,171 sq ft / 108.78 sq m
TERRACE AREA	218 sq ft / 20.25 sq m
TOTAL RESIDENCE	1,389 sq ft / 129.03 sq m

FLOORS 8 - 31

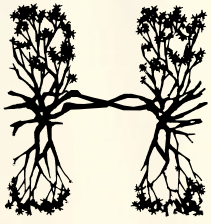


02C
212 SQ.FT.
FLOORS 8-9, 20-22

02A,B
218 SQ.FT.
FLOORS 10-12, 14-16, 17-19,
23-25, 26-28, 29-31



There are various methods for calculating the square footage of a Unit and depending on the method of calculation, the quoted square footage of a Unit in advertising materials may vary from the square footage of a Unit as stated or described in the Prospectus and the Declaration. The dimensions in the Unit shown in these floor plans have been calculated from the exterior boundaries of the exterior walls to the centerline of interior demising walls, including common elements such as structural walls and other interior structural components of the building and in fact vary from the dimensions that would be determined by using the description and definition of the "Unit" set forth in the Prospectus and the Declaration. For your reference, the area of the Unit, determined in accordance with the Unit boundaries as defined in the Prospectus and the Declaration is 1041 sqft for units 802, 902, 1002, 1102, 1202, 1402, 1502, 1602, 1702, 1802, 1902, 2002, 2102, 2202, 2302, 2402, 2502, 2602, 2702, 2802, 2902, 3002 and 3102, which is less than the square footage reflected here. The measurements of room set forth on this floor plan are generally taken at the greatest points of each given room (as if the room were a perfect rectangle) without regard for any cutouts. Accordingly, the area of the actual room will typically smaller than the product obtained by multiplying the stated length times width. All dimensions are approximate and may vary with actual construction. All floor plans are subject to change. The furnishings and décor illustrated are not included with the purchase of the Unit. See Prospectus for information regarding what is offered with the Unit and the calculation of the Unit square footage and dimensions.



HYDE™
SUITES & RESIDENCES
MIDTOWN MIAMI

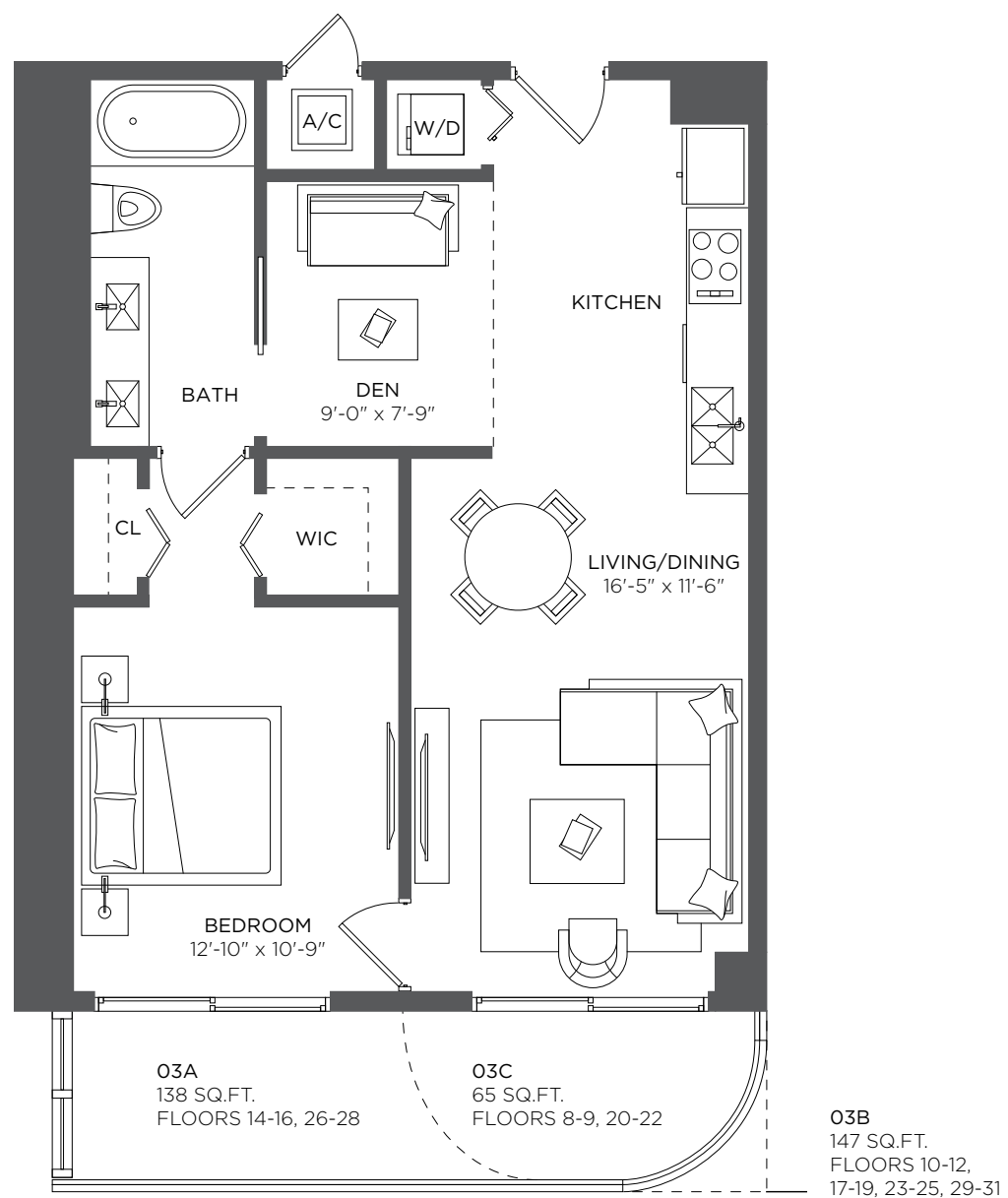
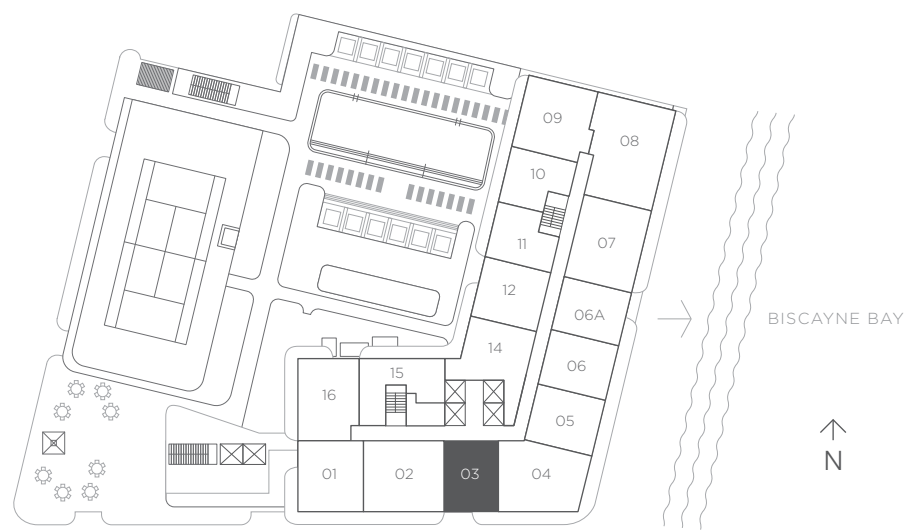


RESIDENCE 03

1 Bedroom 1 Bath + Den

A/C INTERIOR AREA	773 sq ft / 71.81 sq m
TERRACE AREA	138 sq ft / 12.82 sq m
TOTAL RESIDENCE	911 sq ft / 84.63 sq m

FLOORS 8 - 31



There are various methods for calculating the square footage of a Unit and depending on the method of calculation, the quoted square footage of a Unit in advertising materials may vary from the square footage of a Unit as stated or described in the Prospectus and the Declaration. The dimensions in the Unit shown in these floor plans have been calculated from the exterior boundaries of the exterior walls to the centerline of interior demising walls, including common elements such as structural walls and other interior structural components of the building and in fact vary from the dimensions that would be determined by using the description and definition of the "Unit" set forth in the Prospectus and the Declaration. For your reference, the area of the Unit, determined in accordance with the Unit boundaries as defined in the Prospectus and the Declaration is 677 sqft for units 803, 903, 1003, 1103, 1203, 1403, 1503, 1603, 1703, 1803, 1903, 2003, 2103, 2203, 2303, 2403, 2503, 2603, 2703, 2803, 2903, 3003 and 3103, which is less than the square footage reflected here. The measurements of room set forth on this floor plan are generally taken at the greatest points of each given room (as if the room were a perfect rectangle) without regard for any cutouts. Accordingly, the area of the actual room will typically smaller than the product obtained by multiplying the stated length times width. All dimensions are approximate and may vary with actual construction. All floor plans are subject to change. The furnishings and décor illustrated are not included with the purchase of the Unit. See Prospectus for information regarding what is offered with the Unit and the calculation of the Unit square footage and dimensions.

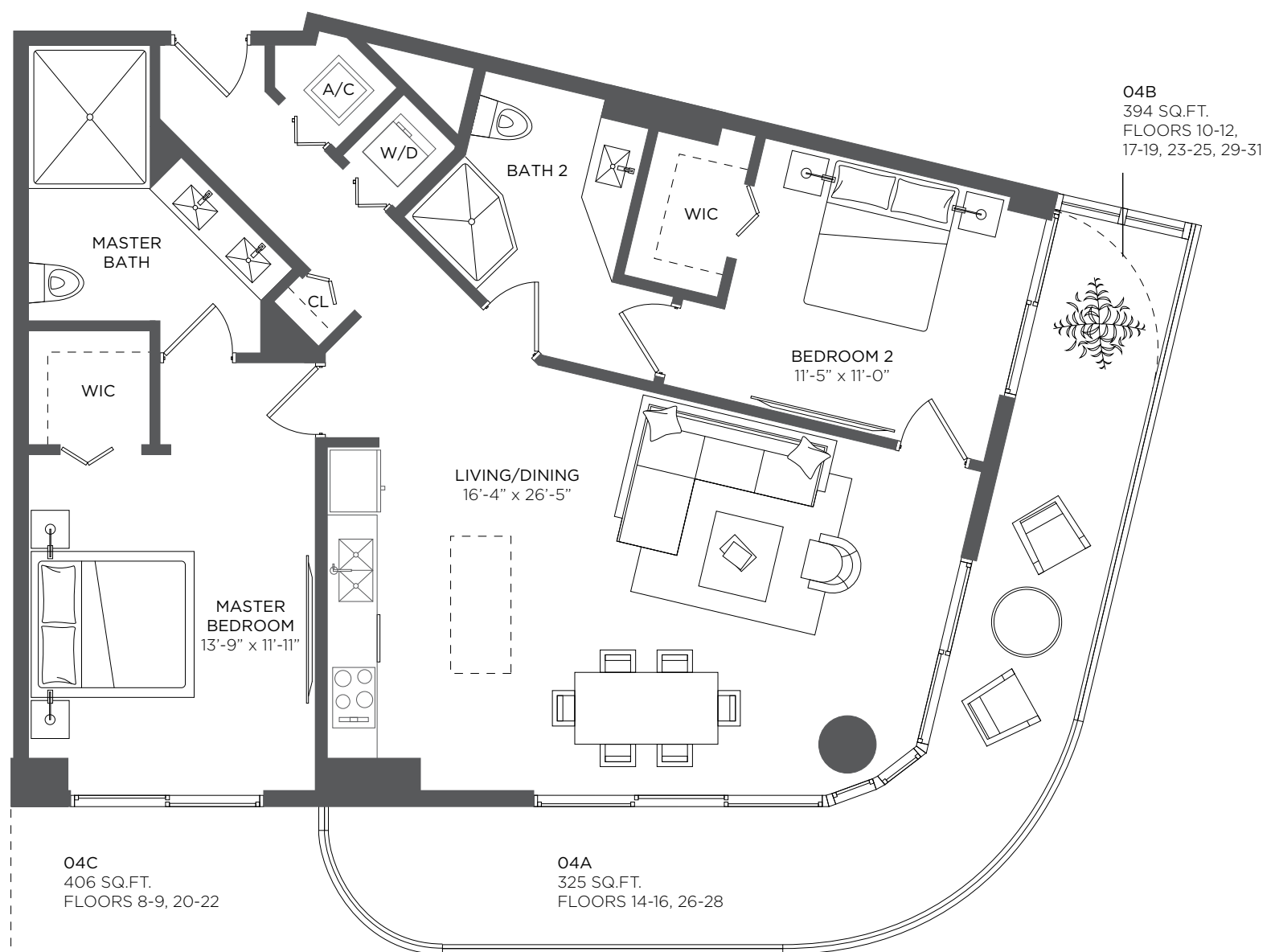
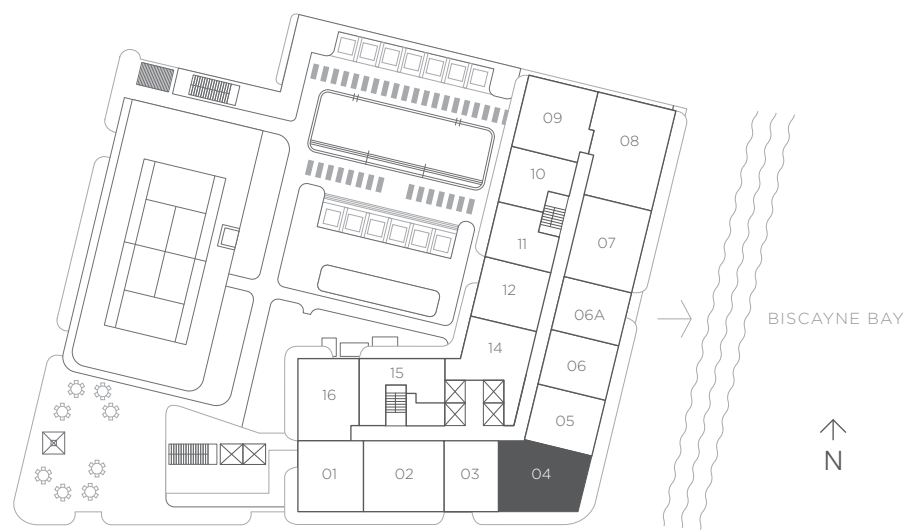


RESIDENCE 04

2 Bedrooms 2 Baths

A/C INTERIOR AREA	1,210 sq ft / 112.41 sq m
TERRACE AREA	325 sq ft / 30.19 sq m
TOTAL RESIDENCE	1,535 sq ft / 142.60 sq m

FLOORS 8 - 31





HYDE™
SUITES & RESIDENCES
MIDTOWN MIAMI

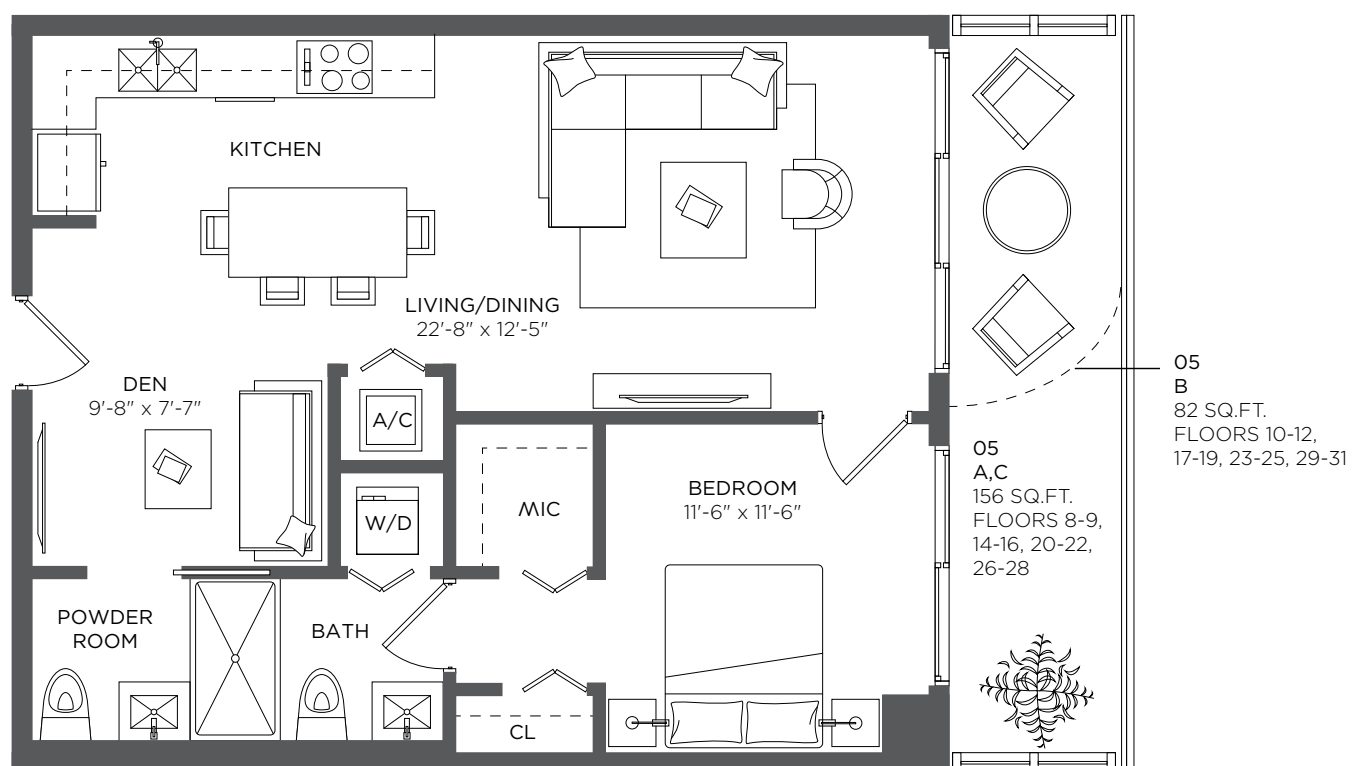
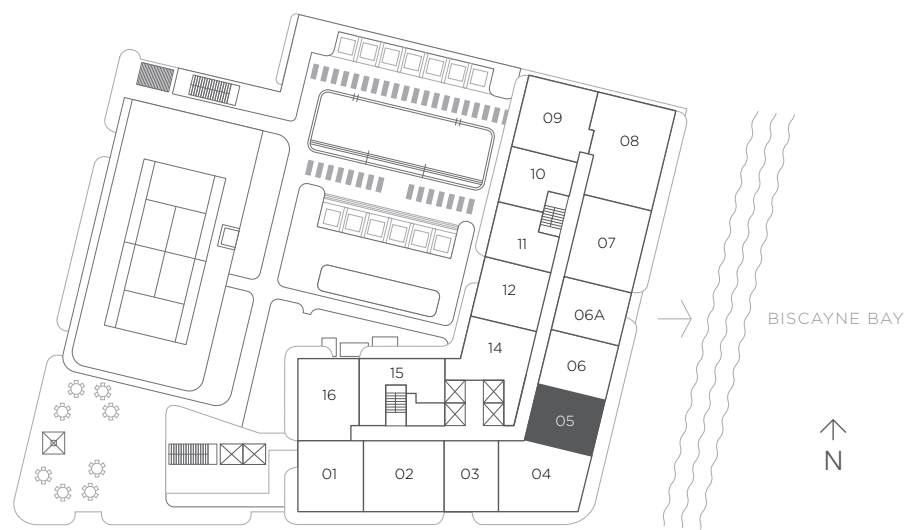


RESIDENCE 05

1 Bedroom 1.5 Baths + Den

A/C INTERIOR AREA	812 sq ft / 75.43 sq m
TERRACE AREA	156 sq ft / 14.49 sq m
TOTAL RESIDENCE	968 sq ft / 89.92 sq m

FLOORS 8 - 31



There are various methods for calculating the square footage of a Unit and depending on the method of calculation, the quoted square footage of a Unit in advertising materials may vary from the square footage of a Unit as stated or described in the Prospectus and the Declaration. The dimensions in the Unit shown in these floor plans have been calculated from the exterior boundaries of the exterior walls to the centerline of interior demising walls, including common elements such as structural walls and other interior structural components of the building and in fact vary from the dimensions that would be determined by using the description and definition of the "Unit" set forth in the Prospectus and the Declaration. For your reference, the area of the Unit, determined in accordance with the Unit boundaries as defined in the Prospectus and the Declaration is 733 sqft for units 805, 905, 1005, 1105, 1205, 1405, 1505, 1605, 1705, 1805, 1905, 2005, 2105, 2205, 2305, 2405, 2505, 2605, 2705, 2805, 2905, 3005 and 3105 which is less than the square footage reflected here. The measurements of room set forth on this floor plan are generally taken at the greatest points of each given room (as if the room were a perfect rectangle) without regard for any cutouts. Accordingly, the area of the actual room will typically smaller than the product obtained by multiplying the stated length times width. All dimensions are approximate and may vary with actual construction. All floor plans are subject to change. The furnishings and décor illustrated are not included with the purchase of the Unit. See Prospectus for information regarding what is offered with the Unit and the calculation of the Unit square footage and dimensions.



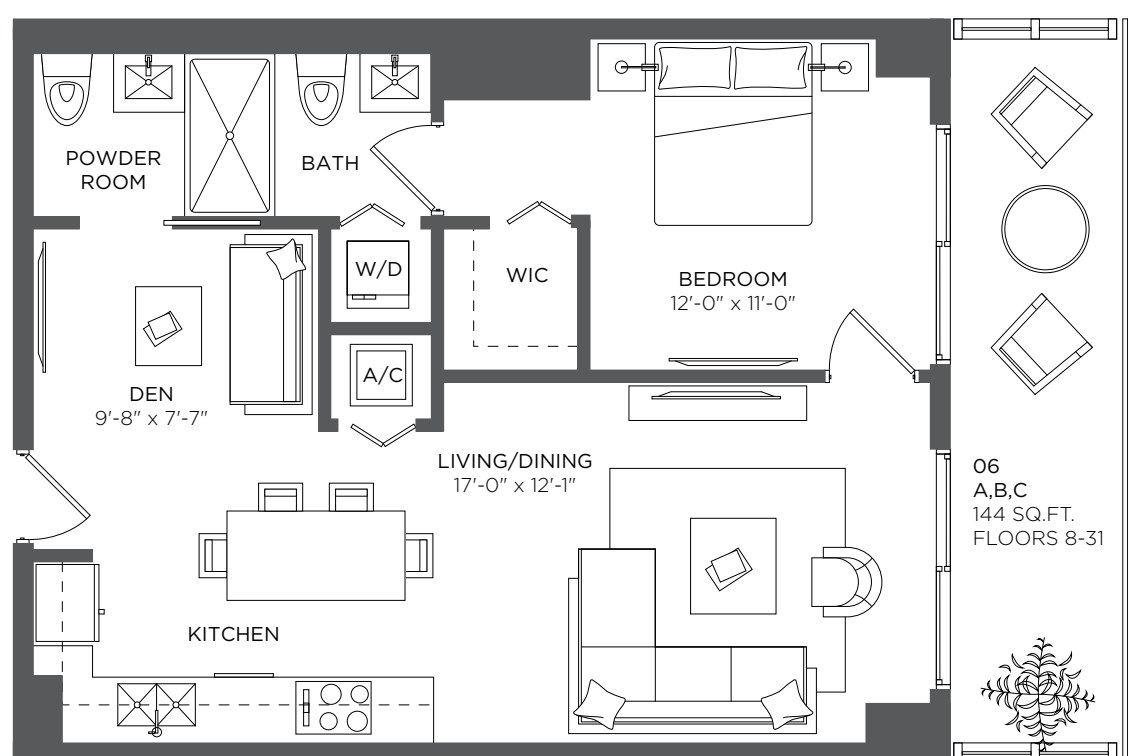
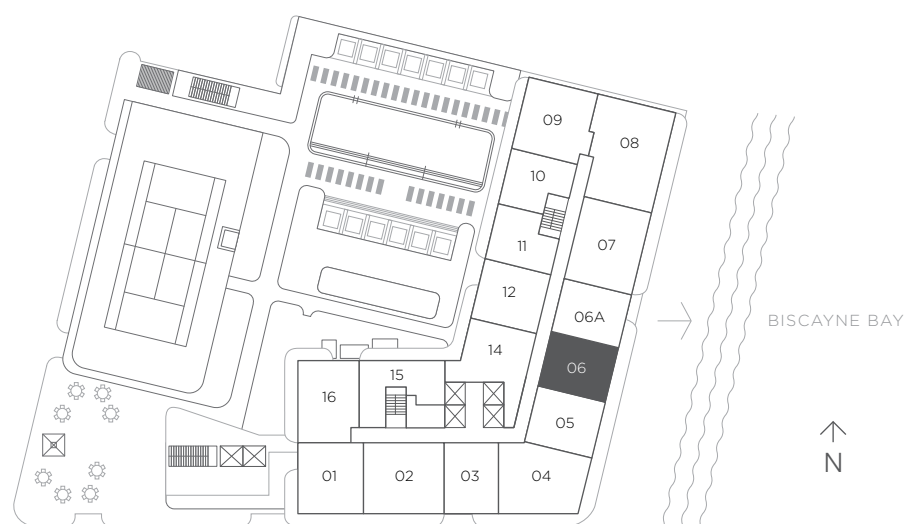
HYDE[™]
SUITES & RESIDENCES
MIDTOWN MIAMI

RESIDENCE 06

1 Bedroom 1.5 Baths + Den

A/C INTERIOR AREA	783 sq ft / 72.74 sq m
TERRACE AREA	144 sq ft / 13.37 sq m
TOTAL RESIDENCE	927 sq ft / 86.11 sq m

FLOORS 8 - 31



There are various methods for calculating the square footage of a Unit and depending on the method of calculation, the quoted square footage of a Unit in advertising materials may vary from the square footage of a Unit as stated or described in the Prospectus and the Declaration. The dimensions in the Unit shown in these floor plans have been calculated from the exterior boundaries of the exterior walls to the centerline of interior demising walls, including common elements such as structural walls and other interior structural components of the building and in fact vary from the dimensions that would be determined by using the description and definition of the "Unit" set forth in the Prospectus and the Declaration. For your reference, the area of the Unit, determined in accordance with the Unit boundaries as defined in the Prospectus and the Declaration is 683 sqft for units 806, 906, 1006, 1106, 1206, 1406, 1506, 1606, 1706, 1806, 1906, 2006, 2106, 2206, 2306, 2406, 2506, 2606, 2706, 2806, 2906, 3006 and 3106 which is less than the square footage reflected here. The measurements of room set forth on this floor plan are generally taken at the greatest points of each given room (as if the room were a perfect rectangle) without regard for any cutouts. Accordingly, the area of the actual room will typically smaller than the product obtained by multiplying the stated length times width. All dimensions are approximate and may vary with actual construction. All floor plans are subject to change. The furnishings and décor illustrated are not included with the purchase of the Unit. See Prospectus for information regarding what is offered with the Unit and the calculation of the Unit square footage and dimensions.



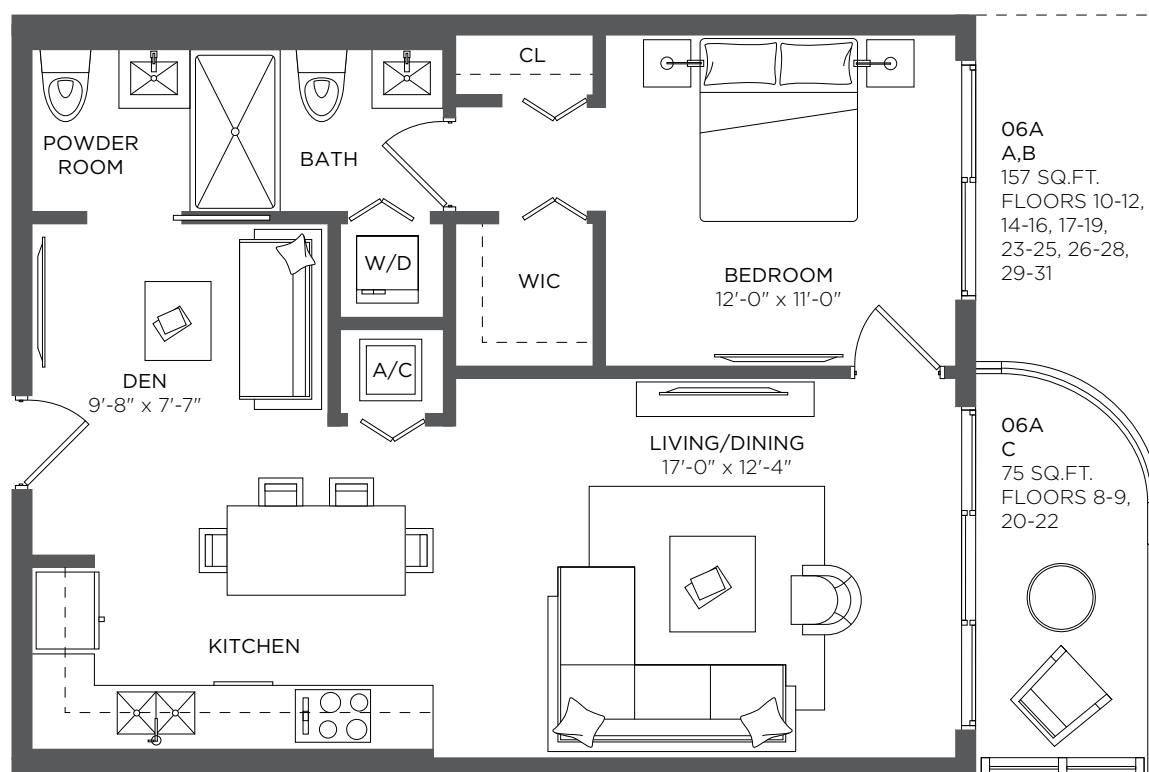
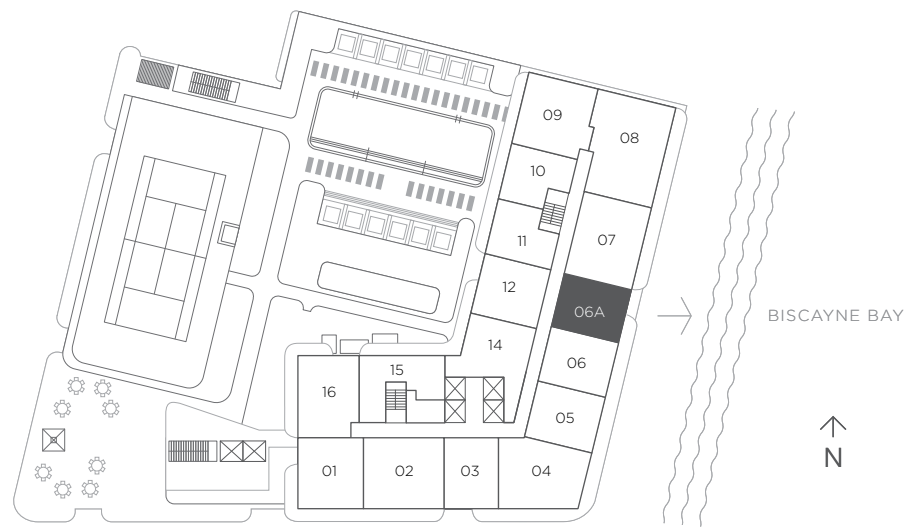


RESIDENCE 06A

1 Bedroom 1.5 Baths + Den

A/C INTERIOR AREA	817 sq ft / 75.90 sq m
TERRACE AREA	75 sq ft / 6.96 sq m
TOTAL RESIDENCE	892 sq ft / 82.86 sq m

FLOORS 8 - 31



There are various methods for calculating the square footage of a Unit and depending on the method of calculation, the quoted square footage of a Unit in advertising materials may vary from the square footage of a Unit as stated or described in the Prospectus and the Declaration. The dimensions in the Unit shown in these floor plans have been calculated from the exterior boundaries of the exterior walls to the centerline of interior demising walls, including common elements such as structural walls and other interior structural components of the building and in fact vary from the dimensions that would be determined by using the description and definition of the "Unit" set forth in the Prospectus and the Declaration. For your reference, the area of the Unit, determined in accordance with the Unit boundaries as defined in the Prospectus and the Declaration is 719 sqft for units 806a, 906a, 1006a, 1106a, 1206a, 1406a, 1506a, 1606a, 1706a, 1806a, 1906a, 2006a, 2106a, 2206a, 2306a, 2406a, 2506a, 2606a, 2706a, 2806a, 2906a, 3006a and 3106a which is less than the square footage reflected here. The measurements of room set forth on this floor plan are generally taken at the greatest points of each given room (as if the room were a perfect rectangle) without regard for any cutouts. Accordingly, the area of the actual room will typically smaller than the product obtained by multiplying the stated length times width. All dimensions are approximate and may vary with actual construction. All floor plans are subject to change. The furnishings and décor illustrated are not included with the purchase of the Unit. See Prospectus for information regarding what is offered with the Unit and the calculation of the Unit square footage and dimensions.

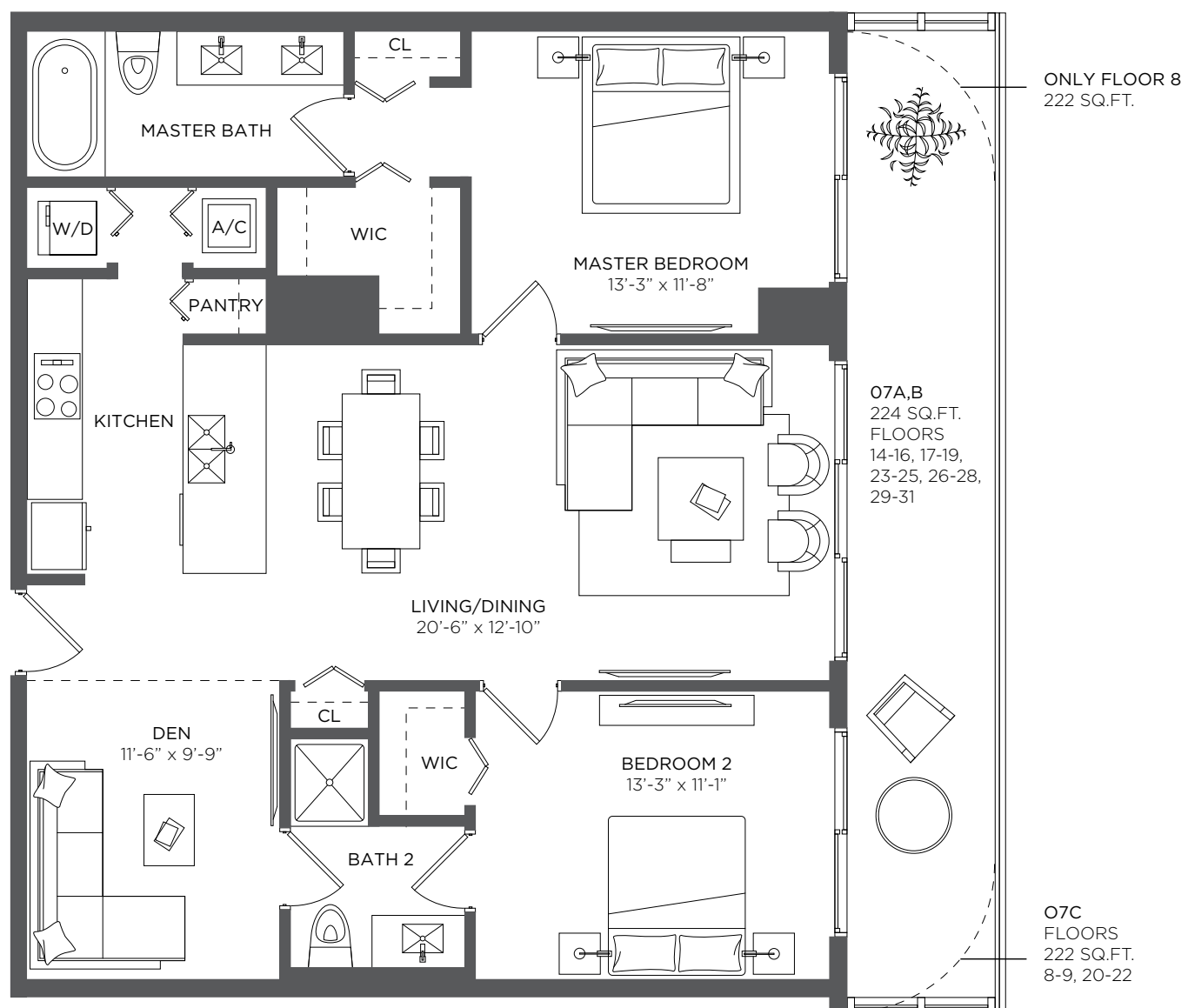
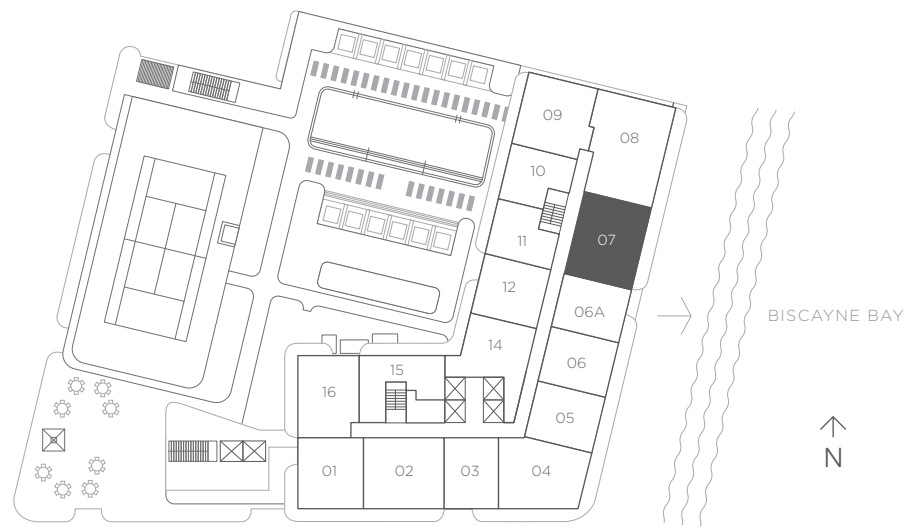


RESIDENCE 07

2 Bedrooms 2 Baths + Den

A/C INTERIOR AREA	1,205 sq ft / 111.94 sq m
TERRACE AREA	224 sq ft / 20.81 sq m
TOTAL RESIDENCE	1,429 sq ft / 132.75 sq m

FLOORS 8 - 31



There are various methods for calculating the square footage of a Unit and depending on the method of calculation, the quoted square footage of a Unit in advertising materials may vary from the square footage of a Unit as stated or described in the Prospectus and the Declaration. The dimensions in the Unit shown in these floor plans have been calculated from the exterior boundaries of the exterior walls to the centerline of interior demising walls, including common elements such as structural walls and other interior structural components of the building and in fact vary from the dimensions that would be determined by using the description and definition of the "Unit" set forth in the Prospectus and the Declaration. For your reference, the area of the Unit, determined in accordance with the Unit boundaries as defined in the Prospectus and the Declaration is 1067 sqft for units 807, 907, 1007, 1107, 1207, 1407, 1507, 1607, 1707, 1807, 1907, 2007, 2107, 2207, 2307, 2407, 2507, 2607, 2707, 2807, 2907, 3007 and 3107, which is less than the square footage reflected here. The measurements of room set forth on this floor plan are generally taken at the greatest points of each given room (as if the room were a perfect rectangle) without regard for any cutouts. Accordingly, the area of the actual room will typically smaller than the product obtained by multiplying the stated length times width. All dimensions are approximate and may vary with actual construction. All floor plans are subject to change. The furnishings and décor illustrated are not included with the purchase of the Unit. See Prospectus for information regarding what is offered with the Unit and the calculation of the Unit square footage and dimensions.



RESIDENCE 08

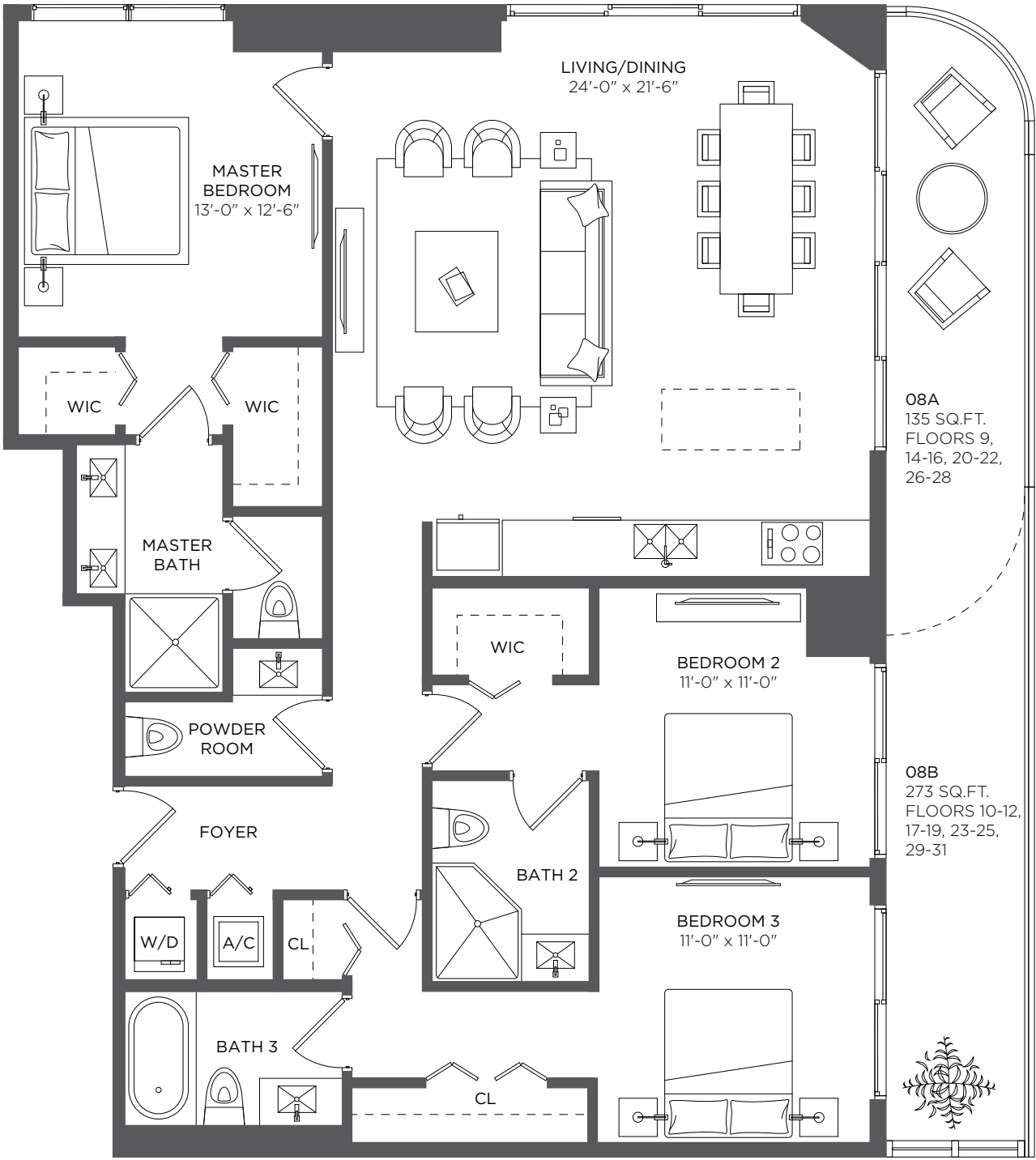
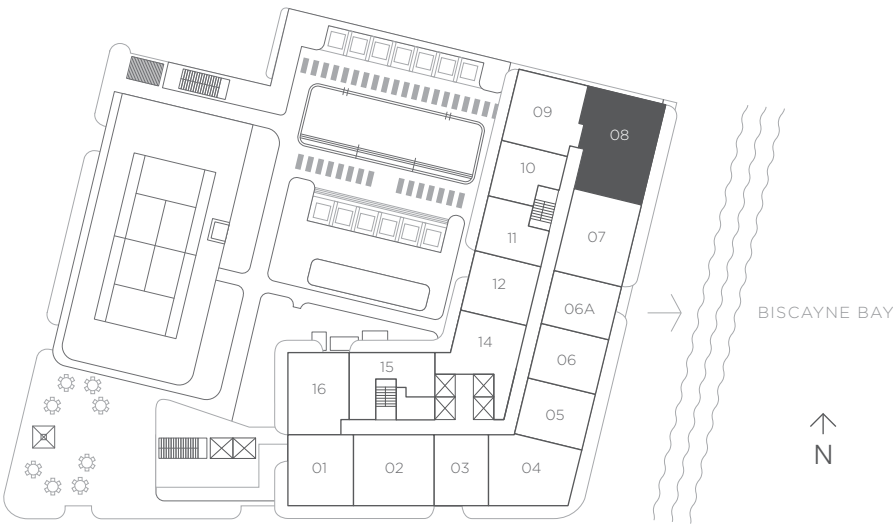
3 Bedrooms 3.5 Baths

A/C INTERIOR AREA 1,595 sq ft / 148.18 sq m

TERRACE AREA 273 sq ft / 25.36 sq m

TOTAL RESIDENCE 1,868 sq ft / 173.46 sq m

FLOORS 9 - 31



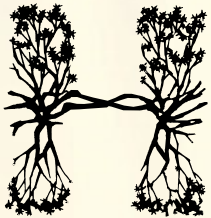
RELATED

sbe

DEZER
DEVELOPMENT



There are various methods for calculating the square footage of a Unit and depending on the method of calculation, the quoted square footage of a Unit in advertising materials may vary from the square footage of a Unit as stated or described in the Prospectus and the Declaration. The dimensions in the Unit shown in these floor plans have been calculated from the exterior boundaries of the exterior walls to the centerline of interior demising walls, including common elements such as structural walls and other interior structural components of the building and in fact vary from the dimensions that would be determined by using the description and definition of the "Unit" set forth in the Prospectus and the Declaration. For your reference, the area of the Unit, determined in accordance with the Unit boundaries as defined in the Prospectus and the Declaration is 1431 sqft for units 908, 1008, 1108, 1208, 1408, 1508, 1608, 1708, 1808, 1908, 2008, 2108, 2208, 2308, 2408, 2508, 2608, 2708, 2808, 2908, 3008 and 3108, which is less than the square footage reflected here. The measurements of room set forth on this floor plan are generally taken at the greatest points of each given room (as if the room were a perfect rectangle) without regard for any cutouts. Accordingly, the area of the actual room will typically smaller than the product obtained by multiplying the stated length times width. All dimensions are approximate and may vary with actual construction. All floor plans are subject to change. The furnishings and décor illustrated are not included with the purchase of the Unit. See Prospectus for information regarding what is offered with the Unit and the calculation of the Unit square footage and dimensions.



HYDE™
SUITES & RESIDENCES
MIDTOWN MIAMI

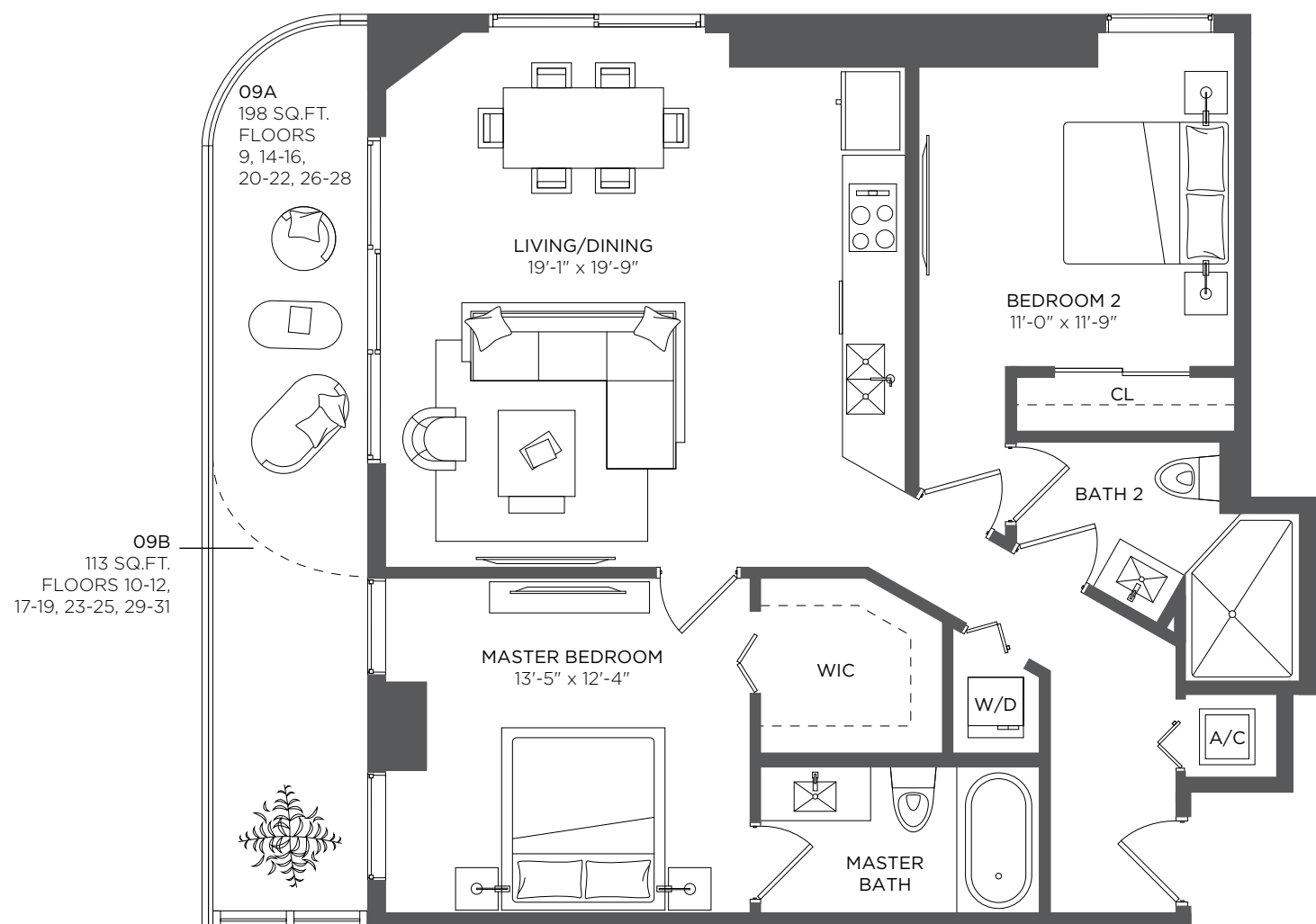
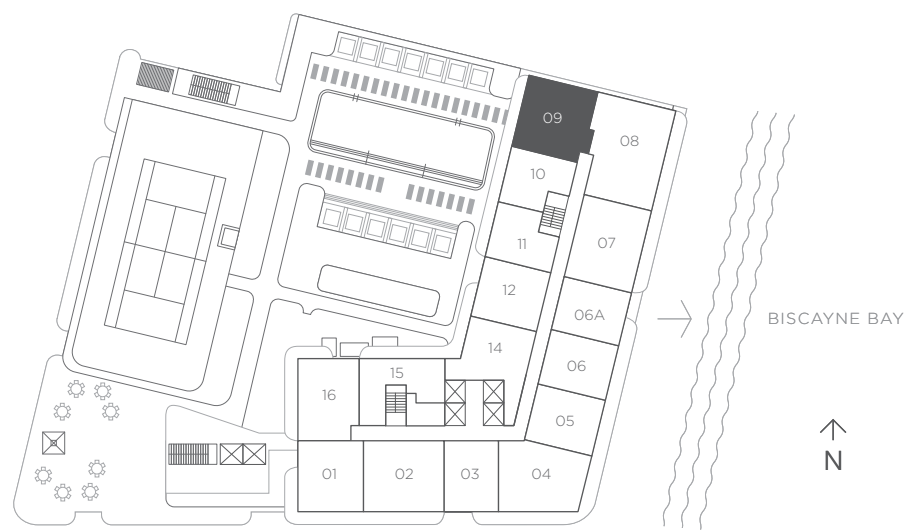


RESIDENCE 09

2 Bedrooms 2 Baths

A/C INTERIOR AREA	1,101 sq ft / 102.28 sq m
TERRACE AREA	198 sq ft / 18.39 sq m
TOTAL RESIDENCE	1,299 sq ft / 120.67 sqm

FLOORS 9 - 31



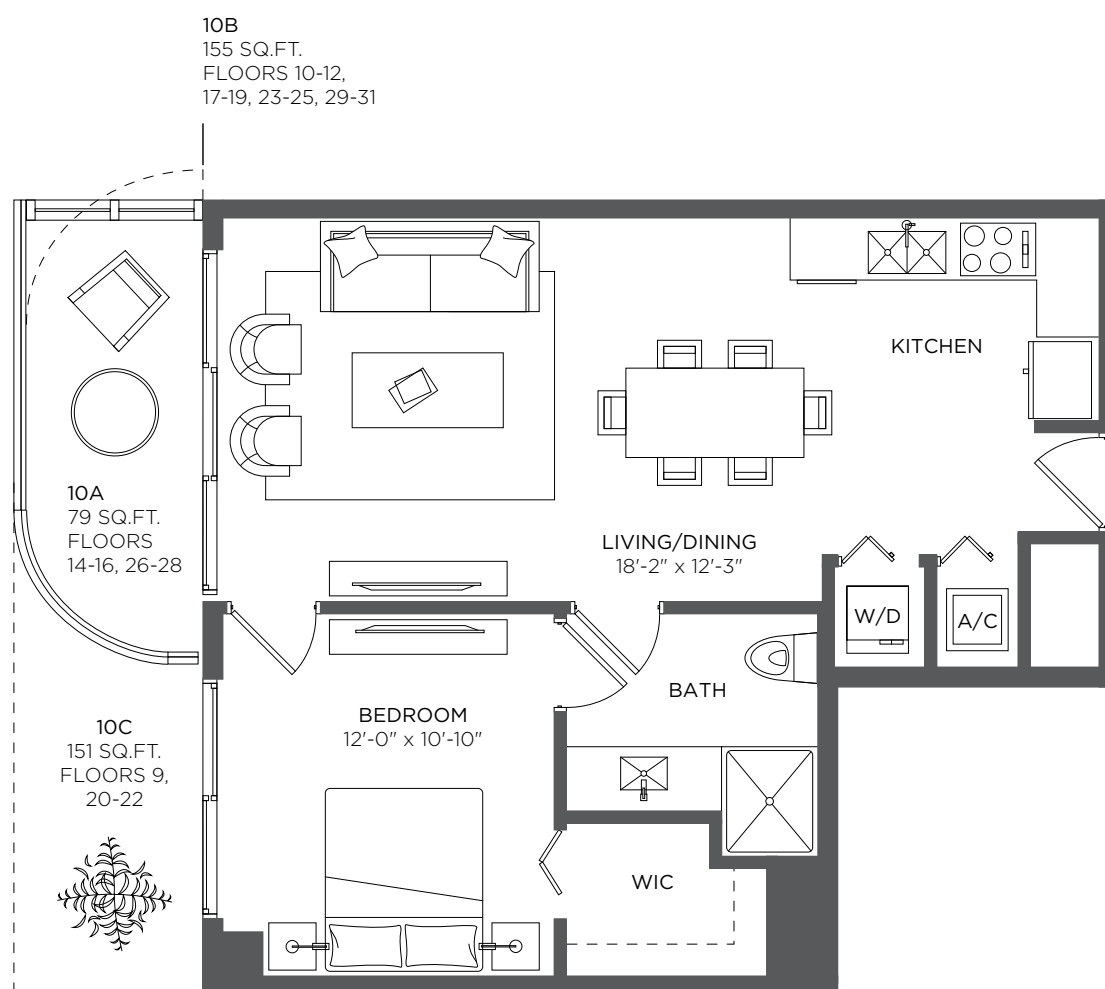
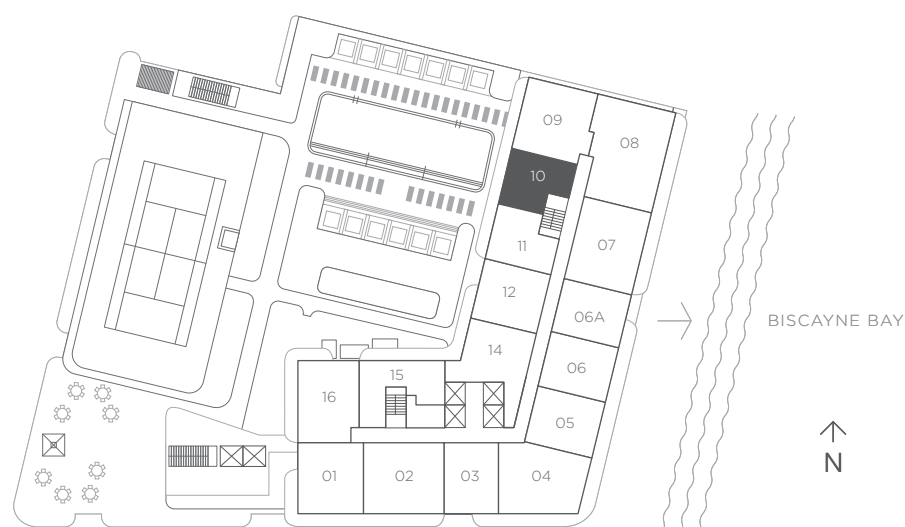


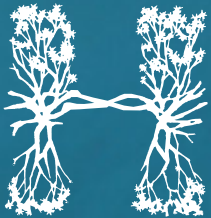
RESIDENCE 10

1 Bedroom 1 Bath

A/C INTERIOR AREA	681 sq ft / 63.26 sq m
TERRACE AREA	79 sq ft / 7.33 sq m
TOTAL RESIDENCE	760 sq ft / 70.59 sq m

FLOORS 9 - 31





HYDE™
SUITES & RESIDENCES
MIDTOWN MIAMI

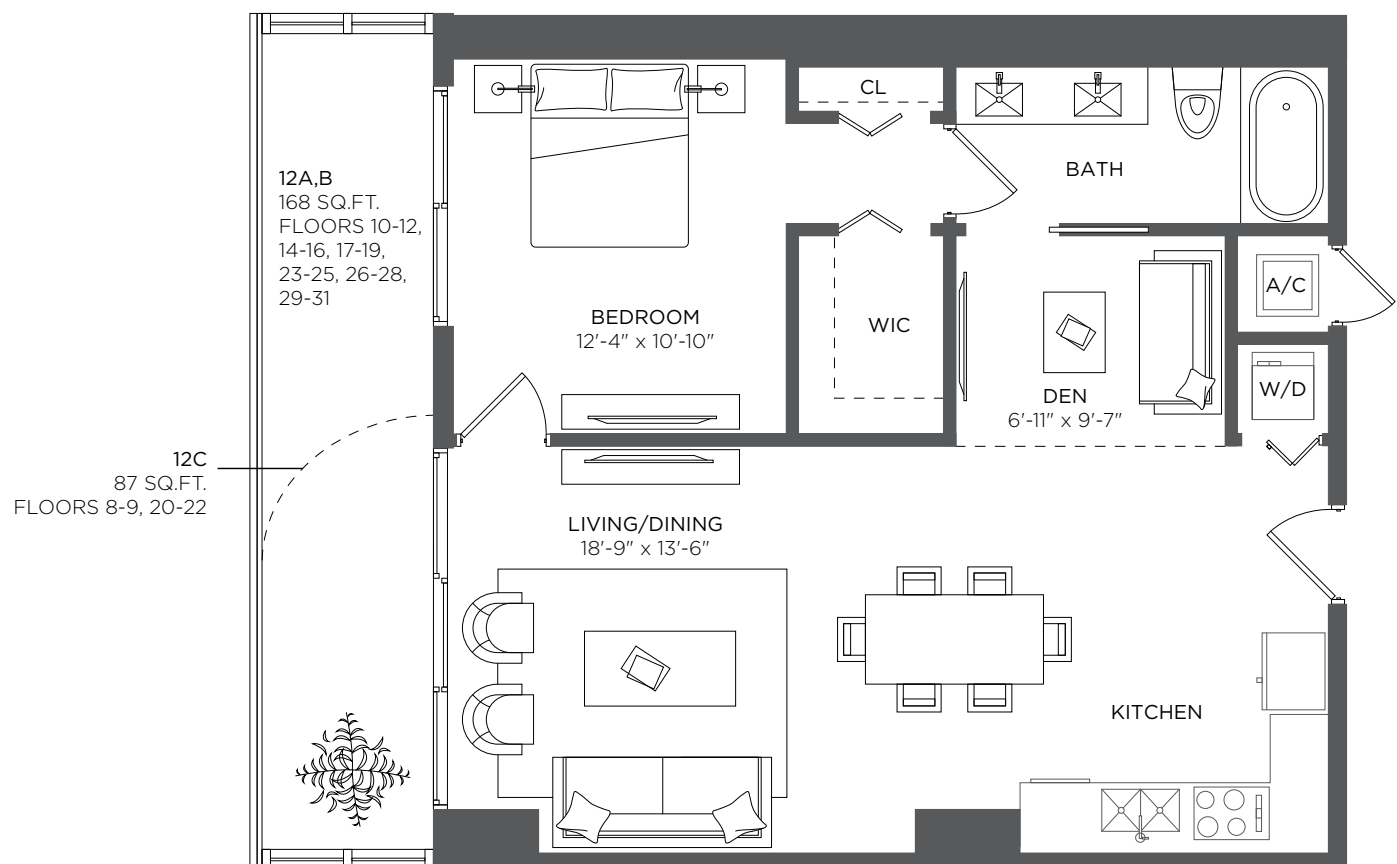
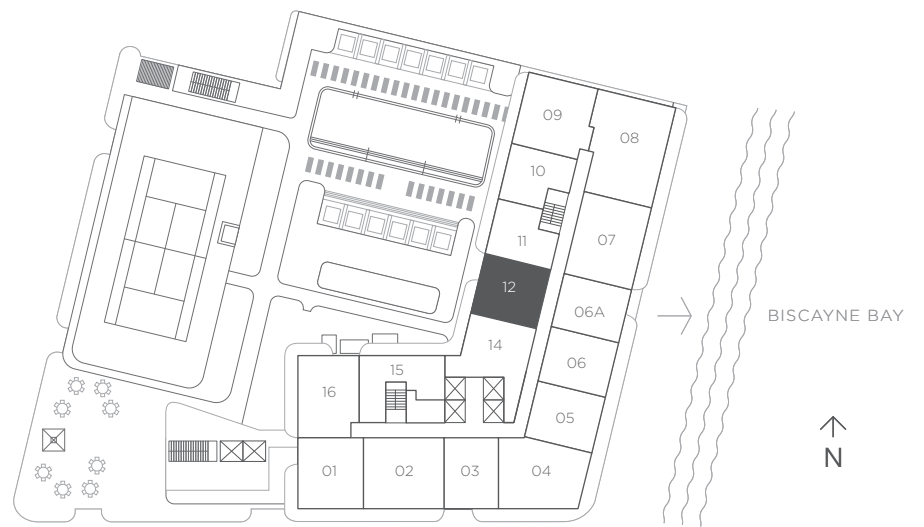


RESIDENCE 12

1 Bedroom 1 Bath + Den

A/C INTERIOR AREA	845 sq ft / 78.50 sq m
TERRACE AREA	168 sq ft / 15.60 sq m
TOTAL RESIDENCE	1,013 sq ft / 94.10 sq m

FLOORS 8 - 31





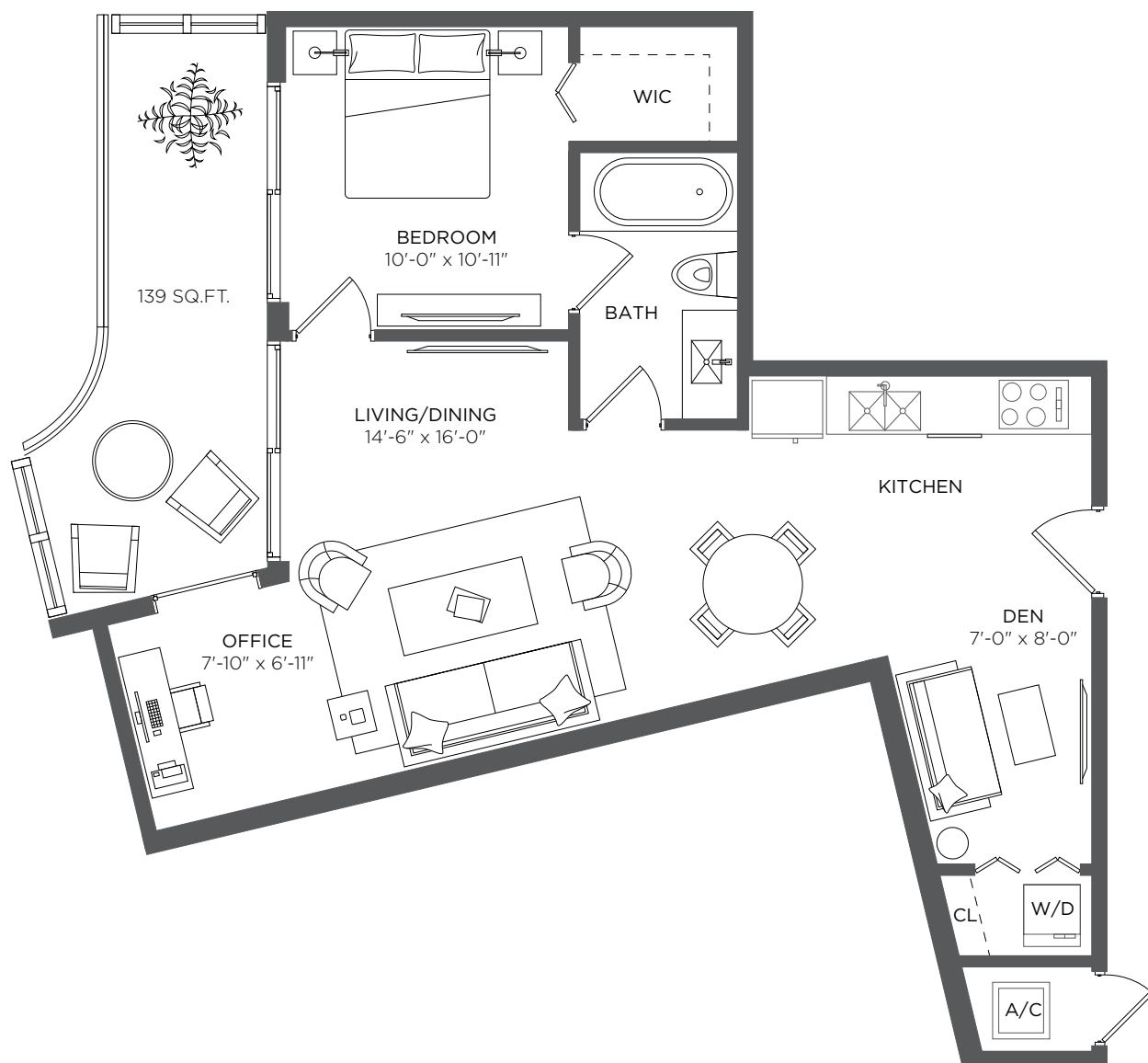
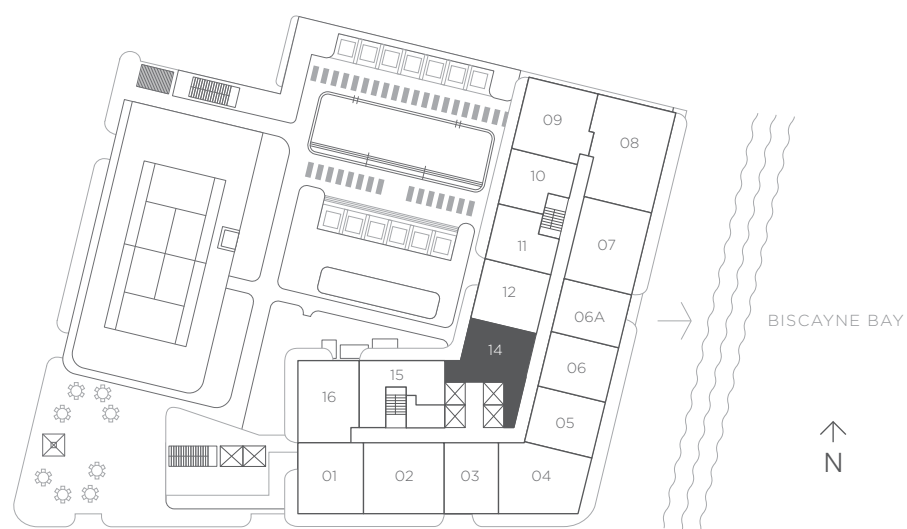
HYDETM
SUITES & RESIDENCES
MIDTOWN MIAMI


RESIDENCE 14

1 Bedroom 1 Bath + Den

A/C INTERIOR AREA	825 sq ft / 85.93 sq m
TERRACE AREA	139 sq ft / 12.91 sq m
TOTAL RESIDENCE	964 sq ft / 98.84 sq m

FLOORS 8 - 31



 There are various methods for calculating the square footage of a Unit and depending on the method of calculation, the quoted square footage of a Unit in advertising materials may vary from the square footage of a Unit as stated or described in the Prospectus and the Declaration. The dimensions in the Unit shown in these floor plans have been calculated from the exterior boundaries of the exterior walls to the centerline of interior demising walls, including common elements such as structural walls and other interior structural components of the building and in fact vary from the dimensions that would be determined by using the description and definition of the "Unit" set forth in the Prospectus and the Declaration. For your reference, the area of the Unit, determined in accordance with the Unit boundaries as defined in the Prospectus and the Declaration is 681 sqft for units 814, 914, 1014, 1114, 1214, 1414, 1514, 1614, 1714, 1814, 1914, 2014, 2114, 2214, 2314, 2414, 2514, 2614, 2714, 2814, 2914, 3014 and 3114, which is less than the square footage reflected here. The measurements of room set forth on this floor plan are generally taken at the greatest points of each given room (as if the room were a perfect rectangle) without regard for any cutouts. Accordingly, the area of the actual room will typically smaller than the product obtained by multiplying the stated length times width. All dimensions are approximate and may vary with actual construction. All floor plans are subject to change. The furnishings and décor illustrated are not included with the purchase of the Unit. See Prospectus for information regarding what is offered with the Unit and the calculation of the Unit square footage and dimensions.

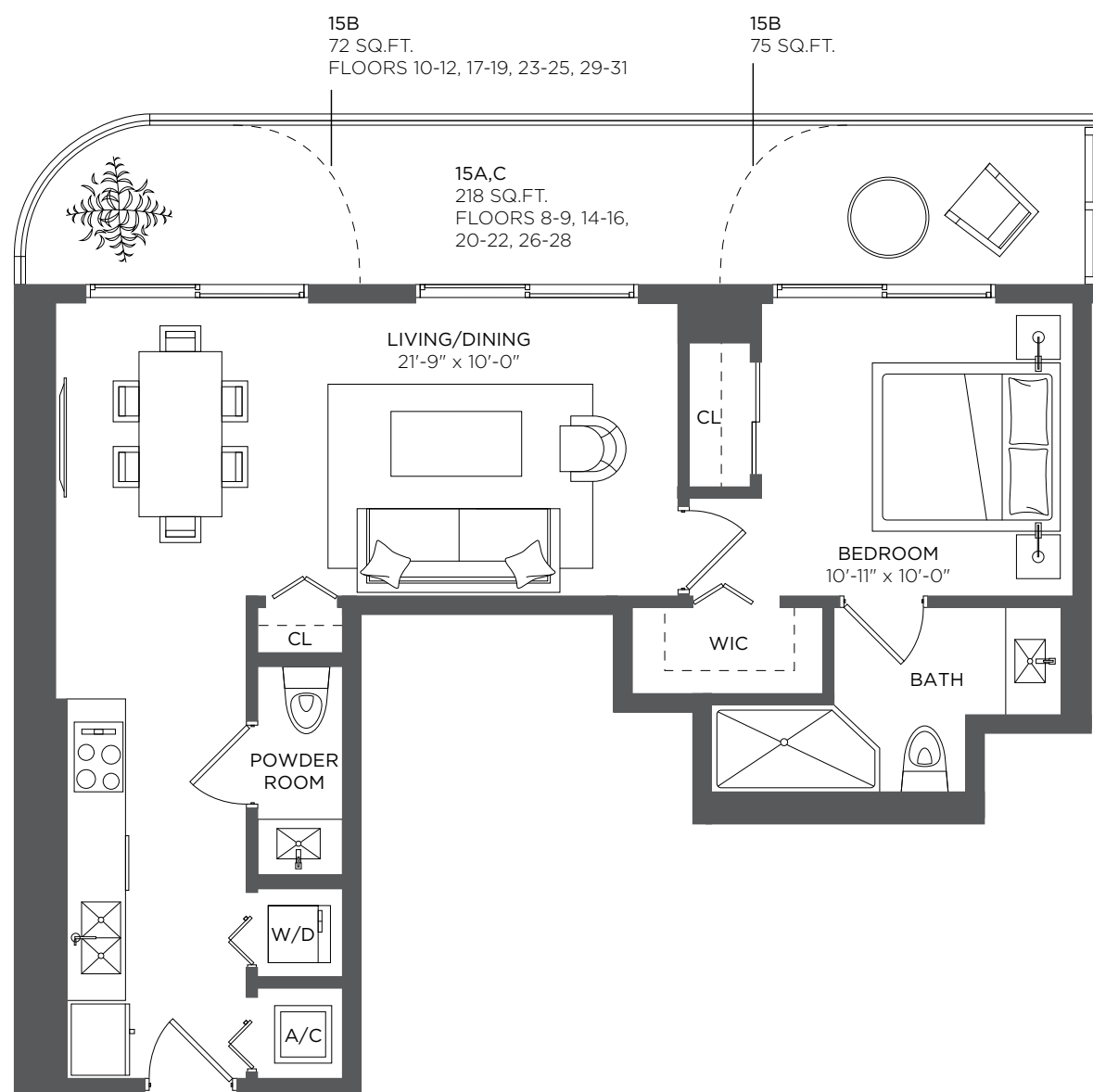
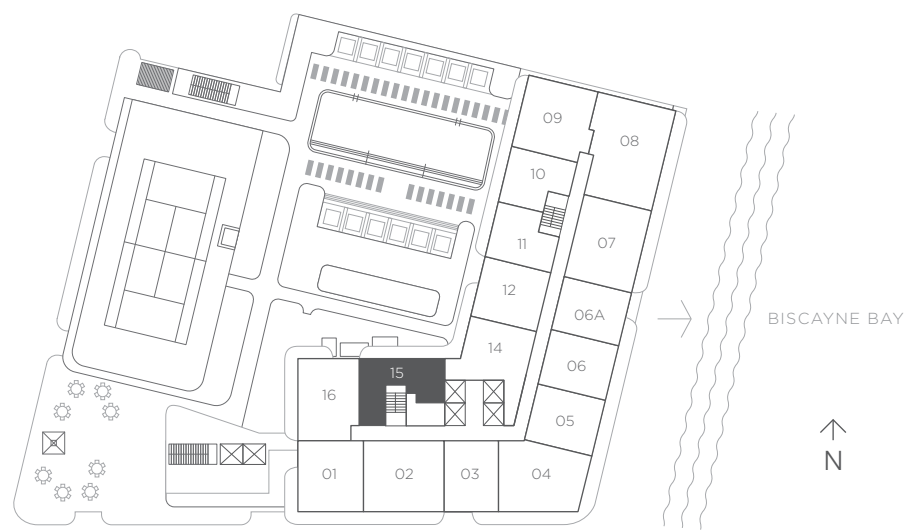


RESIDENCE 15

1 Bedroom 1.5 Baths

A/C INTERIOR AREA	779 sq ft / 72.37 sq m
TERRACE AREA	218 sq ft / 20.25 sq m
TOTAL RESIDENCE	997 sq ft / 92.62 sq m

FLOORS 8 - 31





RESIDENCE 16

2 Bedrooms 2 Baths

A/C INTERIOR AREA	982 sq ft / 91.23 sq m
TERRACE AREA	330 sq ft / 30.65 sq m
TOTAL RESIDENCE	1,322 sq ft / 121.88 sq m

FLOORS 8 - 31

